

# Prepare to be Linked

---

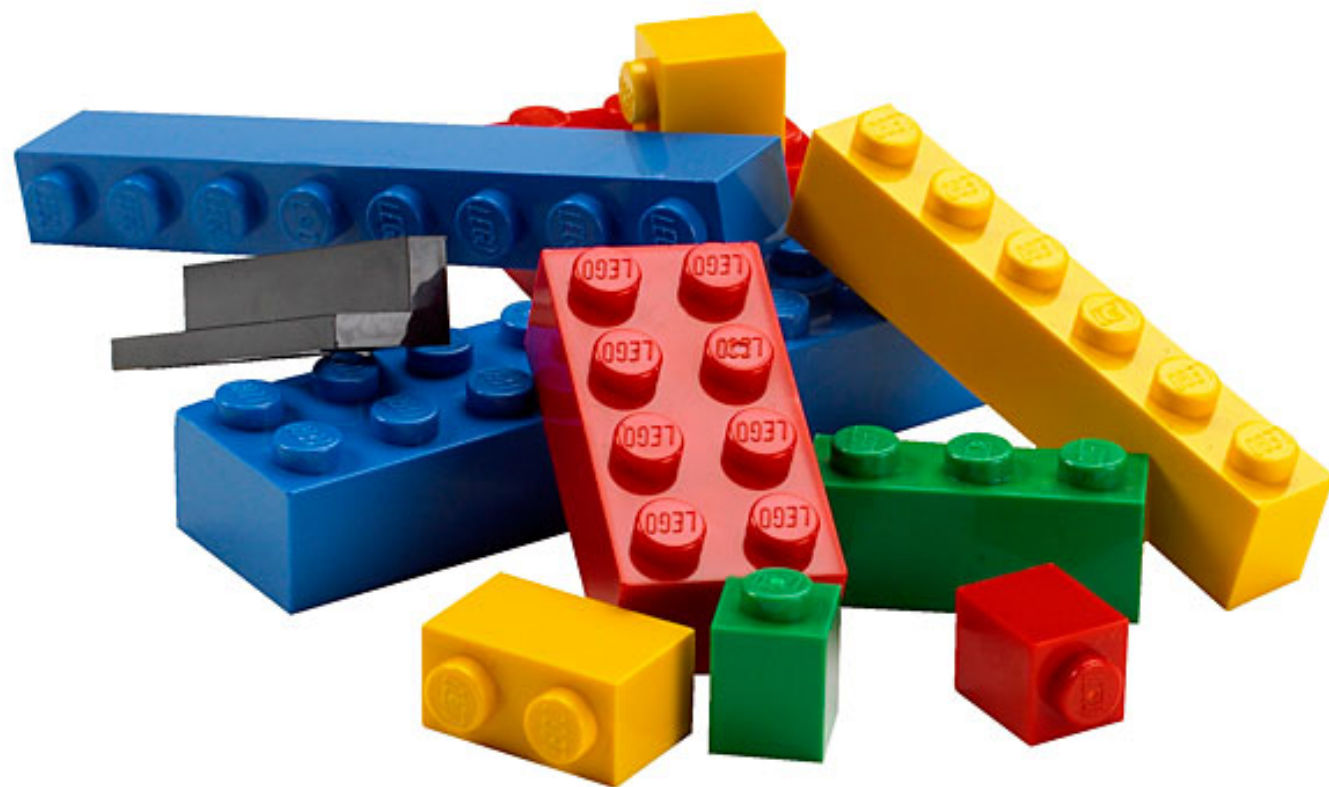
Nancy Fallgren

fallgrennj@nlm.nih.gov

Metadata Librarian

National Library Of Medicine

Presentation To PTPL October 23, 201



# Embrace Change

---

## Linked Data

A set of best practices for publishing and connecting  
*structured data on the Web* ([linkeddata.org](http://linkeddata.org))

## Linked Open Data

Linked Data that is freely available for re-use, no licenses,  
no restrictions

# Operating within the Semantic Web

---

## **A more granular Web, linking data rather than documents**

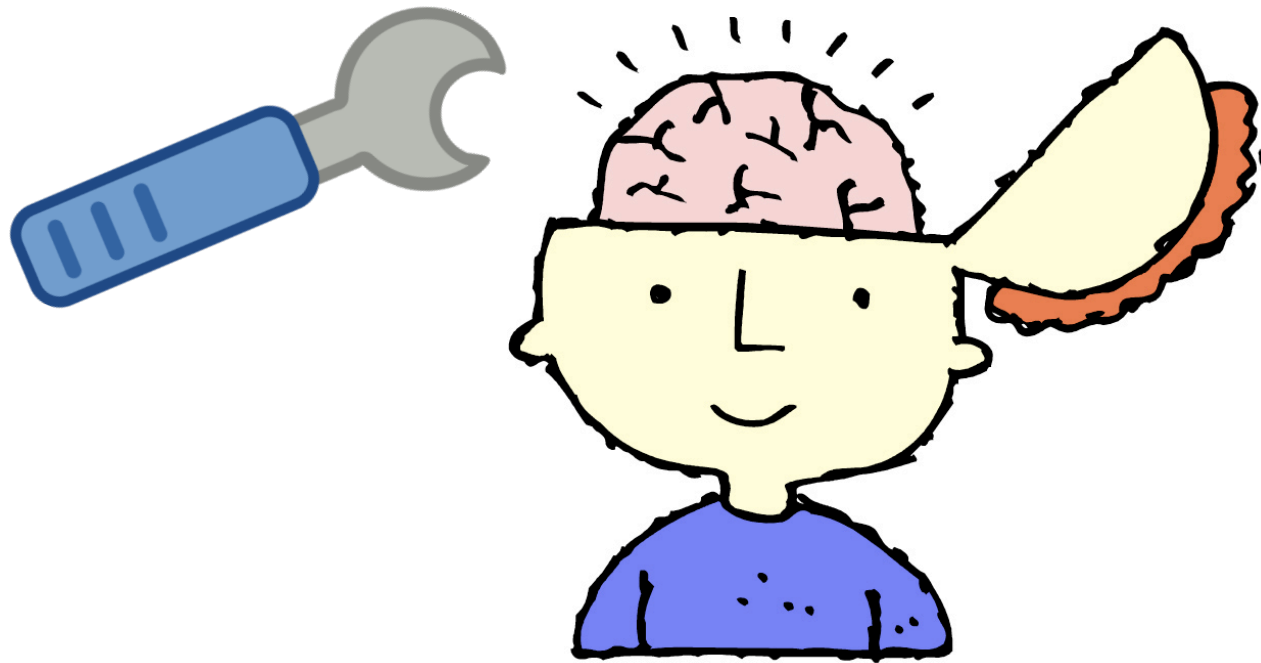
Resource Description Framework/RDF Triples

Subject (IRI) <Predicate (IRI) > Object (IRI or character string)

Each triple must be understandable without the context  
of a 'record'

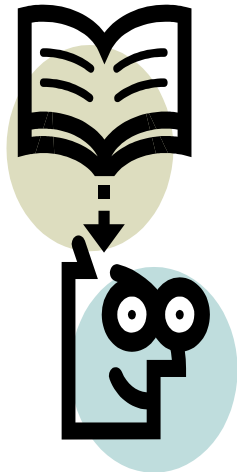
# *Preparing ourselves*

---



# Learn

---



Explore  
LD training  
Discussion  
Experimentation

# Adjust Our Thinking

---

## Think in terms of data rather than records

- Consider how this influences the metadata we record
- Consider success the number of resources linked or number of IRIs added or created

## Conversion of legacy MARC to LD will be lossy

- Question the metadata we record
- What do computer and human users actually need to know

## Finishing v. Iterating

- Assess requirements, develop a solution
- Reassess requirements, question solution, revise as needed
- Iterate frequently



# *Preparing Data*

---





# Preparing for Linked Data

---

Data model development

Preferred RDF ontologies/schema

Whose data do you want to use

Expose authorities

# Recording Data

---

Develop best practices

De-emphasize transcription

LD pilots/testing tools

# *Preparing for Discovery*

---



# Seed the Semantic Web

---

Standard vocabularies in RDF  
Authoritative data in RDF



# Manage Information Overload

---

Emphasize special collections and unique materials

Collaborate with search engine providers







## Marie Curie

Physicist

Marie Skłodowska Curie was a Polish and naturalized-French physicist and chemist who conducted pioneering research on radioactivity. [Wikipedia](#)

Born: November 7, 1867, Warsaw, Poland

Died: July 4, 1934, Passy, Haute-Savoie, France

Spouse: [Pierre Curie](#) (m. 1895–1906)

Discovered: Radium, Polonium

Children: [Irène Joliot-Curie](#), [Ève Curie](#)

### Quotes

[View 5+ more](#)

*"Have no fear of perfection; you'll never reach it." "Nothing in life is to be feared; it is only to be understood."*

*Be less curious about people and more curious about ideas.*

*One never notices what has been done; one can only see what remains to be done.*

### People also search for

[View 15+ more](#)



[Pierre Curie](#)  
Partner



[Irène Joliot-Curie](#)  
Daughter



[Albert Einstein](#)



[Eve Curie](#)  
Daughter



[Isaac Newton](#)



## Marie Curie

Physicist

Marie Skłodowska Curie was a Polish and naturalized-French physicist and chemist who conducted pioneering research on radioactivity. [Wikipedia](#)

Born: November 7, 1867, Warsaw, Poland

Died: July 4, 1934, Passy, Haute-Savoie, France

Spouse: [Pierre Curie](#) (m. 1895–1906)

Discovered: Radium, Polonium

Children: [Irène Joliot-Curie](#), [Ève Curie](#)

### Quotes

[View 5+ more](#)

*"Have no fear of perfection; you'll never reach it." "Nothing in life is to be feared; it is only to be understood."*

*Be less curious about people and more curious about ideas.*

### Resources In Libraries and Museums

### People also search for

[View 15+ more](#)



[Pierre Curie](#)  
Partner



[Irène Joliot-Curie](#)  
Daughter



[Albert Einstein](#)



[Eve Curie](#)  
Daughter



[Isaac Newton](#)



## Marie Curie

Physicist

Marie Skłodowska Curie was a Polish and naturalized-French physicist and chemist who conducted pioneering research on radioactivity. [Wikipedia](#)

Born: November 7, 1867, Warsaw, Poland

Died: July 4, 1934, Passy, Haute-Savoie, France

Spouse: [Pierre Curie](#) (m. 1895–1906)

Discovered: Radium, Polonium

Children: [Irène Joliot-Curie](#), [Ève Curie](#)

### Resources In Libraries and Museums

[Literature by](#)

[Literature about](#)

[Letters](#)

[Manuscripts/Archives](#)

[Images](#)

[Films](#)

### People also search for

[View 15+ more](#)



[Pierre Curie](#)  
Partner



[Irène Joliot-Curie](#)  
Daughter



[Albert Einstein](#)



[Eve Curie](#)  
Daughter



[Isaac Newton](#)

# The Secret to Linking is . . .

---



Using IRIs instead of strings